

Configuration Output Options*

Fold & Book Finisher-A2

2tray, up to 3,250-sheet capacity
Corner, double staple, 30-65 sheet across A3-B5 formats
Supports Staple on demand
Build in V-fold, up to 5 sheets
Build in C-fold, up to 6 sheets



Staple Finisher-AB3

2tray, up to 3,250-sheet capacity
Corner, double staple, 30-65 sheet across A3-B5 formats
Supports Staple on demand



Controller Option

Canon imagePASS-T1
Built on the Fiery FS500 platform



Cassette Feeding Unit-AY1

Paper Capacity: 2 x 550 sheets (80 gsm)
Paper Type: Thin, Plain, Recycled, Eco, Color, Heavy, Bond, Transparency, Pre-punched, Letterhead
Paper Size: A3, A4, A4R, A5, A5R, A6R, B4, B5, B5R



High Capacity Cassette Feeding Unit-F1

A4 2,450 sheets paper capacity (80 gsm)
Paper Type: Thin, Plain, Recycled, Eco, Color, Heavy, Bond, Pre-punched, Letterhead



Inner Finisher-N1

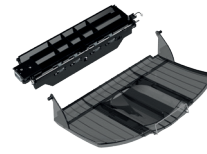
2 tray, 550-sheet capacity
Corner, double staple,
up to 50 sheets
Supports Staple on demand



Inner 2way Tray-M1

100-sheet Tray Capacity (with 80 gsm paper) in A4, A5, A5R, A6R, B5: 100 sheets

50-sheet Tray Capacity in SRA3, A3, A4R, B4, B5R



3rd Copy Tray Kit-A1

Capacity (with 80gsm paper):
A4, A5R, B5: 100 sheets
A3, A4R, B4, B5R: 75 sheets



imageFORCE C7165

Canon

Delighting You Always

EXCEPTIONAL PERFORMANCE TO POWER EVERY BUSINESS MOVE



Canon imageFORCE C7165 is our professional office printer, built to meet the demands of today's modern workplace.

Featuring Canon's advanced D² Exposure Technology, the C7165 utilises organic light-emitting diodes (OLED) as its light source to achieve superior print quality.

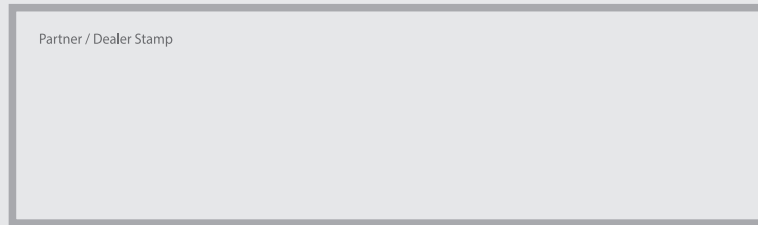
This innovation enhances the clarity and vibrancy of printed materials while expanding creative possibilities for businesses, enabling a wider range of applications to be produced in-house.

*Paper capacity may vary with different paper type/size.



Adobe PostScript

Partner / Dealer Stamp



To arrange for a demonstration, simply contact our office below.

SOUTH & SOUTHEAST ASIA REGIONAL HEADQUARTERS

Canon Singapore Pte. Ltd. | 1 Fusionopolis Place #14-10 Galaxis Singapore 138522
Tel: 65-6799 8888 | Fax: 65-6799-8882 | <https://asia.canon/> | <https://sg.canon/>

This document is for general information only and contents are subject to change without notice. Errors and omissions excepted. Weights and dimensions are approximates. Options, name and availability may vary by regions. Nothing in this document should be construed as a warranty. We expressly disclaim any liability or contractual obligations in connection with this document. Trademarks belong to their respective owners.

Canon, imageFORCE, MEAP, eMaintenance, iW and Business Can Be Simple are trademarks of Canon Inc. and/or its affiliates. "MEAP" is a trademark of CANON Inc., referring to an "application platform" for Canon multifunction and single function printers. Other names may be the trademarks of their respective owners. uniFLOW is an independent party software distributed by Canon Singapore Pte Ltd.

Adobe, LiveCycle, PostScript, and the PostScript logo are either registered trademarks or trademarks of Adobe in the United States and/or other countries.

© 2025 Canon Singapore Pte. Ltd.
All rights reserved. Printed in Singapore.



CONNECTIVITY

Get the option to access cloud platforms like Google Drive and Dropbox directly from the device. Enjoy mobile printing with Canon PRINT, Apple AirPrint and more for ultimate convenience.



SECURITY

Advanced protection for your data, with features like user authentication and audit logs that help you monitor and mitigate potential risks.



RELIABILITY

Engineered for optimal performance, with intelligent maintenance tools and long-lasting parts that reduce downtime and maximise uptime.



SUSTAINABILITY

Built with up to 30% recycled plastic, supported by eco-friendly packaging and lower energy consumption.

Business Can Be Simple

imageFORCE C7165 Specifications

Main Unit

Machine type

A3 Color Multifunctional

Core functions

Print, Copy, Scan, Send, Store and Optional Fax

Processor

1.8GHz Dual Core Processor

Control Panel

10.1" TFT LCD WSVGA Color Touch panel

Memory

Standard: RAM: 6.0GB

Storage

Standard: (SSD) 256GB

Optional: (SSD) 1TB

Supported Media Types

Multi-purpose tray:
Thin, Plain, Recycled, Eco, Color, Heavy, Coated, Tracing, Bond, Transparency, Label, Pre-punched, Letterhead, Tab, Envelope, Water Resistant

Paper Cassette (Upper/Lower):
Thin, Plain, Recycled, Eco, Color, Heavy, Bond, Transparency, Pre-punched, Letterhead, Envelope*
*Envelope Feeder Attachment (standard) is required.

Supported Media Weights

Multi-purpose tray: 52 to 300 gsm
Paper Cassette (Upper): 52 to 256 gsm
Paper Cassette (Lower): 52 to 300 gsm
Duplex: 52 to 256 gsm

Supported Media Sizes

Multi-purpose tray: Standard size: SRA3, A3, A4, A4R, A5, A5R, A6R, B4, B5, B5R
Custom size: 98.0 x 139.7 mm to 320.0 x 457.2 mm
Free Size: 98.0 x 139.7 mm to 320.0 x 457.2 mm

Long sheet*: 98.0 x 457.3 mm to 320.0 mm x 1,300.0 mm
Envelopes: COM 10 No.10, Monarch, DL, ISO-C5

Envelope custom size: 98.0 x 90.0 mm to 320.0 x 457.2 mm
*Long Sheet Feeding Tray-B1 is required.

Upper Cassette: Standard size: A4, A5, A5R, A6R, B5

Custom Size: 98.0 x 148.0 mm to 297.0 x 215.9 mm

Envelopes: COM10 No.10, Monarch, DL, ISO-C5

Lower Cassette: Standard size: A3, A4, A4R, A5, A5R, A6R, B4, B5, B5R

Custom size: 98.0 x 148.0 mm to 304.8 x 457.2 mm

Envelopes: COM10 No.10, Monarch, DL, ISO-C5

Finishing Capabilities*

Collate, Group, Offset, Staple, Saddle Stitch, Hole Punch, Eco Staple, Staple On Demand, V-fold, C-fold, Z-fold
*Finishing capabilities vary depending on the options connected.

Installation Space (W x D)

Basic: 1,137 x 1,162 mm (Right Cover Open with Multi-purpose tray extended + Cassette Drawers Open)
Fully Configured: 2,221 x 1,162 mm (Staple Finisher-AB3/Paper Folding/Booklet Finisher-A2 with the extension tray extended + Paper Folding Unit-L1 + Paper Deck Unit-F2 + Cassette Drawers open)

Dimensions (W x D x H)

723 x 722 x 937 mm

Warm-up Time

Quick Startup Mode: 4 Seconds or less*
*Time from device power-on to when the copy icon appears and is enabled to operate on the touch panel display. From Sleep Mode: 7 Seconds or Less
From Power On: 6 Seconds or less*
*Time from device power-on, until copy ready (not print reservation).

Interface Connection

NETWORK
Standard: 1000Base-T/100Base-TX/10Base-T
Optional: Wireless LAN (IEEE 802.11a/b/g/n/ac/ax)
OTHERS Standard: USB 2.0 (Host) x1, USB 3.0 (Host) x1, USB 2.0 (Device) x1
Optional: Serial Interface, Copy Control Interface

Paper Supply Capacity (A4, 80gsm)

Standard: 1,200 sheets
100-sheet Multi-purpose tray x 1
550-sheet Paper cassette x 2
Maximum: 6,350 sheets (with High Capacity Cassette Feeding Unit-F1 + Paper Deck Unit-F2)

Paper Output Capacity (A4, 80gsm)

Standard: 250 sheets
Maximum: 3,450 Sheets (with Staple Finisher-AB3 or Paper Folding/Booklet Finisher-A2 and 3rd Copy Tray Kit-A1)

Weight*

*including regular toner
Approx. 117 kg

Copy Specifications

First-Copy-Out Time (A4, BW/CL)

Approx. 2.7 / 3.7 seconds or less

Copy Resolution (dpi)

600 x 600

Multiple Copies

Up to 999 copies

Copy Speed (BW and CL)

up to 65 ppm*2 (A4, A5*1, A5R, A6R*1), up to 33 ppm (A3), up to 42 ppm (A4R)

*1 1-sided only.

*2 up to 70ppm when paper feed from 1st Cassette and Paper Deck Unit-F2 and High Capacity Cassette Feeding Unit-F1.

Copy Density

Automatic or Manual (9 Levels)

Magnification

Variable zoom: 25% to 400% (1% Increments)

Scan Specifications

Type

Single-pass Duplexing Automatic Document Feeder* [2-sided to 2-sided (Automatic)]

*Multi-Sheet Feed Detection is supported.

Document Feeder Acceptable Paper Weight

Document Feeder media weight: 38 to 220 gsm (BW, CL)

*An acceptable weights of A6R or smaller is 50 to 220gsm.

Document Feeder Paper Capacity

(80 gsm) up to 200 Sheets

Supported Media Sizes

Platen scanning size: up to 297.0x 431.8 mm

Document Feeder media size: A3, A4, A4R, A5, A5R, A6R, B4, B5, B5R, B6R

Custom size: 69.9 x 139.7 mm to 304.8 x 431.8 mm

Scan Resolution (dpi)

600 x 600

Pull Scan Specifications

Color Network ScanGear2 for both TWAIN and WIA

Supported OS: Windows® 10/11/Server 2016/Server 2019/Server 2022

Scan Speed (ipm: BW/CL; A4)

1-sided Scanning: 135/135 (300 x 300 dpi, send), 80/80 (600 x 600 dpi, copy)

2-sided Scanning: 270/270 (300 x 300 dpi, send), 160/90 (600 x 600 dpi, copy)

Send Specifications

Destination

Standard: E-mail/Internet FAX (SMTP*), SMB, FTP, WebDAV, Mail Box
Optional: Super G3 FAX, IP Fax
*Available OAuth 2.0 authentication method on Microsoft 365 and Google Workspace

Address Book

LDAP (2,000)/Local (1,600)/Speed dial (200)

Universal Send Features

Original Type Selection, Two-sided Original, Book to Two Pages, Different-size Originals, Density Adjustment, Sharpness, Copy Ratio, Erase Frame, Job Build, Delayed Send, Preview, Job Done Notice, File Name, Subject/Message, Reply-to, E-mail Priority, TX Report, Original Content Orientation, Skip Blank Pages

Communication Protocol

File: FTP(TCP/IP), SMB3.1.1 (TCP/IP), WebDAV
E-mail/I-Fax: SMTP, POP3

File Format

TIFF(MMR), JPEG*, PDF (Compact, Searchable, Optimize for Web, PDF/A-1b, Trace & Smooth, Encrypted, Device Signature, User Signature), XPS(Compact, Searchable, Device Signature, User Signature), Office Open XML (PowerPoint, Word)

*Only Single page

Print Specifications

Print Speed (BW and CL)

up to 65 ppm*2 (A4, A5*1, A5R, A6R*1), up to 33 ppm (A3), up to 42 ppm (A4R)

*1 1-sided only.

*2 up to 70ppm when paper feed from 1st Cassette and Paper Deck Unit-F2 and High Capacity Cassette Feeding Unit-F1.

Operating System

UFR II: Windows®
10/11/Server2016/Server2019/Server2022, macOS(10.14 or later)
PCL: Windows®
10/11/Server2016/Server2019/Server2022
PS: Windows®
10/11/Server2016/Server2019/Server2022, macOS(10.14 or later)
PPD: Windows®
10/11/Server2016/Server2019/Server2022, macOS(10.14 or later)

Printing From Mobile And Cloud

AirPrint, Mopria, IPP Everywhere, Canon PRINT, uniFLOW Online, Universal Print and Cloud Connector

A range of software and MEAP-based solutions are available to provide printing from mobile devices or internet-connected devices and cloud-based services depending on your requirements.

[Please contact your sales representative for further information](#)

OS Standard Printing

Android/Windows® 10/Windows® 11/Chrome OS/macOS (11.2.2 or later) /iOS (15.2 or later)/iPadOS

Print Resolution (dpi)

4,800 x 2,400

Fonts

PS fonts: 136 Roman_x000D_
PCL fonts: 93 Roman, 10 Bitmap fonts, 2 OCR fonts, Andalé Mono WT J/K/S/T*1 (Japanese, Korean, Simplified and Traditional Chinese), Barcode fonts*2

*1 Optional PCL International Font Set-A1 is required.

*2 Optional Barcode Printing Kit-D1 is required.

Page Description Languages

Standard: UFR II, PCL6/PCL5
Optional: Adobe® PostScript®3TM

Direct Print

Supported file types: PDF, EPS, TIFF/JPEG, and XPS

Fax Specifications

Maximum Number of Connection Lines

4

Modem Speed

Super G3: 33.6 kbps
G3: 14.4 kbps

Compression Method

MH, MR, MMR, JBIG

Resolution (dpi)

400 x 400 (Ultra Fine),
200 x 400 (Super Fine),
200 x 200 (Fine), 200 x 100 (Normal)

Environmental Specifications

Operating Environment

Temperature: 10 to 30 °C
Humidity: 20 to 80 % RH (Relative Humidity)

Power Consumption

Maximum: Approx. 2,000 W
Sleep mode: Approx. 0.5 W*
*0.5 W is not available in all circumstances due to certain settings.

Power Source

220-240 V, 50/60 Hz, 6 A