



Connect to Your Global Audience

Publish your favourite photos on social media channels effortlessly.

The built-in Wi-Fi function allow fast and easy transfer of images to your smart devices wirelessly. Together with the new Bluetooth® low energy technology, you can maintain constant connection between the camera and your smart device without draining battery life.

Whenever the need to transfer image or shoot remotely via your smart device arises, the Bluetooth connection will automatically switch to Wi-Fi to seamlessly enable the desired functions.



One App that Put More Control in Your Hands

Designed for both iOS and Android™, the Camera Connect app easily lets you save and share images and videos. The app also uses your smart device as a monitor for remote shooting and playback of photos and movies.

Connecting to NFC compatible devices is as simple as bringing the camera close for easy transfer of your photos. Built in GPS allows easy geotagging of your images with data such as latitude, longitude and elevation.



Lenses & Accessories to Fulfil Every Imagination

The EOS 6D Mark II is backed by a comprehensive interchangeable lens system with more than 70 lenses to choose from. Empower your imagination with endless possibilities through the eyes of EOS.



Enjoy longer shooting time and better vertically-positioned control with the BG-E21 Battery Grip. Designed to hold up to two LP-E6/LP-E6N battery packs, the grip is constructed for comfortable and intuitive operation.

BG-E21 Battery Grip

EOS 6D Mark II

SPECIFICATIONS

Image Sensor Type	CMOS sensor		
Aspect ratio	3:2		
Image sensor size	Approx. 35.9 x 24.0 mm		
Effective pixels	Approx. 26.2 megapixels		
Image type	JPEG, RAW (14-bit Canon original), RAW+JPEG simultaneous recording possible	Continuous shooting speed	High-speed continuous shooting: Max. approx. 6.5 shots/sec. * The continuous shooting speed decreases during Anti-flicker shooting, during Live View shooting with Servo AF, or during Live View shooting with an external Speedlite. * The continuous shooting speed for high-speed continuous shooting may decrease depending on the temperature, battery level, flicker reduction, shutter speed, aperture, subject conditions, brightness, AF operation, lens, flash use, shooting function settings, etc. Low-speed continuous shooting: Max. approx. 3.0 shots/sec. * The continuous shooting speed decreases during Live View shooting with an external Speedlite. * During Panning mode in viewfinder shooting: Max. approx. 4.3 shots/sec., in Live View shooting: Max. approx. 2.7 shots/sec. (at 1/30 sec. shutter speed, with maximum aperture)
Pixels recorded	L (Large) Approx. 26.0 megapixels (6240 x 4160) M (Medium) Approx. 11.5 megapixels (4160 x 2768) S1 (Small 1) Approx. 6.5 megapixels (3120 x 2080) S2 (Small 2) Approx. 3.8 megapixels (2400 x 1600) RAW Approx. 26.0 megapixels (6240 x 4160) M-RAW Approx. 14.6 megapixels (4680 x 3120) S-RAW Approx. 6.5 megapixels (3120 x 2080)	Max. burst	JPEG Large/Fine: Approx. 110 shots (Approx. 150 shots) RAW: Approx. 18 shots (Approx. 21 shots) RAW+JPEG Large/Fine: Approx. 17 shots (Approx. 19 shots) * Based on Canon's standard testing SD card (Standard: 8 GB / High speed: 16 GB, UHS-I compatible) and standard testing conditions (High-speed continuous shooting, ISO 100, Standard Picture Style). * Figures in parentheses are the number of shots when a Canon's standard testing UHS-I SD card is used.
Viewfinder Type	Eye-level pentaprism	External Speedlite	Compatible with EX-series Speedlites
Coverage	Vertical/Horizontal approx. 98% (with eyepoint approx. 21 mm and aspect ratio set to 3:2)	Flash exposure compensation	±3 stops in 1/3- or 1/2-stop increments
Monitor size and dots	Wide 3.0-in. (3:2) with approx. 1.04 million dots	Movie Recording format	MP4 * time-lapse movies: MOV format MPEG-4 AVC/H.264 Variable (Average) bit rate * 4K time-lapse movies: Motion JPEG
Focusing brightness range (via Viewfinder)	EV -3 - 18 (with the center AF point supporting f/2.8, One-Shot AF, room temperature, ISO 100)	Movie recording size	Full HD (1920x1080), HD (1280x720) * time-lapse movies: 4K (3840x2160) and Full HD selectable
Focus operation	One-Shot AF, AI Servo AF, AI Focus AF, Manual focusing (MF)	Frame rate	NTSC (59.94p/29.97p/23.98p) PAL (50.00p/25.00p)
AF fine adjustment	AF Microadjustment	Live View Shooting/ Movie Shooting Focus method	Dual Pixel CMOS AF
Metering mode	Approx. 7,560-pixel RGB+IR metering sensor and 63-zone TTL open-aperture metering	Wi-Fi	IEEE 802.11b/g/n
ISO speed (Recommended exposure index)	Basic Zone modes: ISO speed set automatically P, Tv, Av, M, B; ISO Auto, ISO 100 - ISO 40000 manual setting (in 1/3- or whole-stop increments), and expansion to L (equivalent to ISO 50), H1 (equivalent to ISO 51200), H2 (equivalent to ISO 102400) provided. * With highlight tone priority set, the minimum limit will be ISO 200.	NFC	NFC Forum Type 3/4 Tag compliant (dynamic)
Exposure compensation	With viewfinder shooting: ±5 stops in 1/3- or 1/2-stop increments With Live View shooting: ±3 stops in 1/3- or 1/2-stop increments AEB (Auto Exposure Bracketing): ±3 stops in 1/3- or 1/2-stop increments (can be combined with manual exposure compensation)	Bluetooth	Bluetooth Specification Version 4.1 compliant (Bluetooth low energy technology)
Flicker reduction	Possible	GPS Functions	Possible
HDR Shooting - Dynamic range adjustment	Auto, ±1, ±2, ±3	Dimensions (wxhxd)	Approx. 144.0 x 110.5 x 74.8 mm / 5.67 x 4.35 x 2.94 in.
Shutter speed	1/4000 sec. to 30 sec. (total shutter speed range; available range varies by shooting mode), Bulb, X-sync at 1/180 sec.	Weight	Approx. 765 g / 26.98 oz. (including battery pack and card) / Approx. 685 g / 24.16 oz. (body only)
DISCLAIMERS			
All the data above is based on Canon's testing standards and CIPA (Camera & Imaging Products Association) testing standards and guidelines. Dimensions and weight listed above are based on CIPA Guidelines (except weight for camera body only). Product specifications and the exterior are subject to change without notice. If a problem occurs with a non-Canon lens attached to the camera, consult the respective lens manufacturer.			

This document is for information only and the contents are subject to change without notice. Errors and omissions excepted. Images are simulated. Weight and dimensions are approximate. Nothing in this document should be construed as a warranty, Product / Service options, name and availability may vary by region. We expressly disclaim any liability or contractual obligations with respect to this document. Canon and Power Shot, among others are trademarks of Canon Inc. and/or its affiliates. Other names, marks and logos contained in this document may be the registered trademarks or trademarks of their respective owners.

CANON IMAGING ASIA

CANON ASIA

@CANONASIA

SNAPSHOT
SNAPSHOT.CANON-ASIA.COM

SOUTH AND SOUTHEAST ASIA REGIONAL HEADQUARTERS:

CANON SINGAPORE PTE. LTD.

1 Fusionopolis Place

#15-10 Galaxis Singapore 138522

www.canon-asia.com

Isnt on an original warranty by your sales office. Specifications are subject to change without notice. Images are simulated.

30th
ANNIVERSARY
EOS SYSTEM

Canon
Delighting You Always



Full of Imagination.

EOS 6D Mark II

26.2 MEGA
PIXELS
CMOS

FULL
FRAME
CMOS

Dual Pixel AF
CMOS

DIGIC
7

Cross-type
5-point
45 AF

Upto
6.5
Frames
Per Sec

4K
Time-Lapse
Movie

GPS

Vari angle LCD

Wi-Fi / NFC

Made in
JAPAN

0208W432

See the Full Picture

The EOS 6D Mark II is equipped with a **26.2 megapixels Full-frame CMOS sensor** that captures image of outstanding details and superior colour reproduction.

DIGIC 7 image processor significantly improves detection and tracking performance as well as noise reduction during high sensitivity shooting. With an **ISO100 - 40 000** (expandable to 102400), the EOS 6D Mark II delivers low-noise, high resolution images, even in challenging lighting conditions.



26.2 MEGA PIXELS CMOS

DIGIC 7

FULL FRAME CMOS

ISO 40000 25600

Powerful and Compact

The EOS 6D Mark II is designed for full-frame performance while keeping its compact and lightweight body. Weighing in at only approx. 685g, the camera packs a heavy punch with impeccable high image quality, high sensitivity performance and improved AF capability.



approx. 685g*

* Weight is based on EOS 6D Mark II body only.

Let Your Imagination Drives Creativity

Dual Pixel CMOS AF

With the addition of Dual Pixel CMOS AF, the EOS 6D Mark II achieves excellent focus precision and speed both in Live View and movie shooting. Expand your imagination by exploring interesting angles with the Vari-angle Touch Screen LCD. Shooting from difficult angles is now as simple as a touch on the screen to establish focus and take a shot.



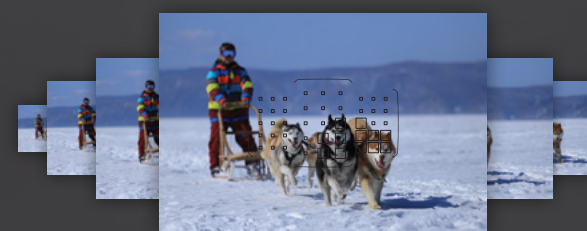
In movie recording, Dual Pixel CMOS AF provides superb subject tracking performance as well as fluid focus transition with a touch of the LCD panel. Enjoy Full HD 60p quality and the new in-camera Movie digital IS function that reduces shaking when shooting hand-held movies.



Extend your repertoire to include stunning **4K Time-lapse Movie** with the EOS 6D Mark II. This function automatically adjust exposure according to scene brightness to produce professional-looking time-lapse movie.

- Dual Pixel CMOS AF
- Vari angle LCD
- EOS Movie FULL HD
- 4K Time-Lapse Movie

Focus as Fast as Your Intuition



Trust your instinct and whenever you are ready, the EOS 6D Mark II can fire up to **6.5 frames per second** for approximately 110 shots in JPEG/FINE. The camera's all cross-type **45-point AF** system ensures accurate focusing and tracking of fast subjects and has low luminance performance of **EV -3**** which makes focusing fast even in dim light.

- Up to 6.5 Frames Per Sec
- Cross-type point 45 AF
- 75600 PIXELS RGB+IR Metering sensor
- RAW JPEG In-Camera RAW processing

* The number of AF points, cross-type AF points, and dual cross-type AF points varies depending on the lens used.

** For center point AF, supporting f2.8, One-shot AF, room temperature, ISO 100