

EOS

Canon

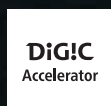
Delighting You Always



EOS
R1

Be ONE with Mastery

FIRST EOS R-SERIES **FULL-FRAME** FLAGSHIP CAMERA



Dual Pixel **AF**
Intelligent



THE PINNACLE OF EOS R-SERIES



The long-awaited flagship is here. Carrying on the prestige and excellence of Canon's 1 Series cameras, the new EOS R1 for the RF mount surpasses the imagination of professionals who need absolute precision and speed out in the field.

Along with powerful advancements in photography capabilities, movie performance upgrades in the EOS R1 open up new ways of capturing key moments in demanding and epic scenes.

From sports to wildlife, capture unprecedented shots with full confidence, as the EOS R1 is the ultimate camera that trailblazes the next generation of creative visions.

Accelerated Capture and Deep Learning

DIGIC
Accelerator

Achieve high-speed and high-accuracy subject recognition with the most powerful image processing system, comprising the full-frame back-illuminated stacked CMOS sensor, DIGIC Accelerator, and DIGIC X.

CMOS
SENSOR

DIGIC
ACCELERATOR

DIGIC
X

Dual Pixel Intelligent AF | Dual Pixel Intelligent AF



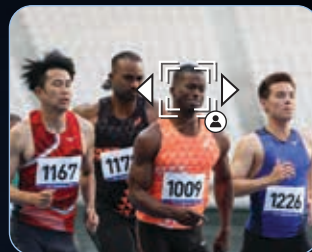
Dual Pixel Intelligent AF with Cross-Type AF Support

Distinguish moving subjects from horizontal obstacles for reliable tracking.



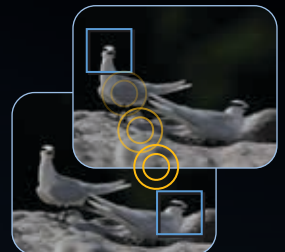
Action Priority AF

Automatically switch AF targets in football, basketball or volleyball games by identifying decisive moments.



Register People Priority

Pre-select up to 100 faces to prioritise for automatic tracking of specific individuals.



Eye Control AF

Instantly switch targets between multiple fast-moving subjects just by using eye movements.

Superior Image Quality

Achieve Greater Image Stabilisation (IS)

Advanced IS Correction with
5-AXIS IN-BODY IS

IN-BODY
IMAGE
STABILIZER × **OPTICAL**
IMAGE
STABILIZER

Enhanced Details and Precision

Up to **96MP**
from 24MP with
In-Camera Upscaling

40FPS
with **Blackout-Free** in
Electronic Viewfinder (EVF)

ISO 102,400
with **Neural Network**
Noise Reduction

Up to **20 shots**
beforehand with
Pre-Continuous Shooting

Movie Performance

Pre-Recording Setting

REC button is pushed



PRE-RECORDING DURATION

3sec or **5sec**

Start movie recording up to
3 or 5 seconds beforehand
to capture missed moments.

Proxy Recording

Internal recording support
with simultaneous proxy
recording is available in

2K and **FHD**

Dual Shooting

Simultaneously
capture photos at
17.8MP and record
movies in FHD 60p.



Operability and Network

Dual CFexpress Type B Slot

Gives users the flexibility to separately
shoot images and videos, main videos
and proxy recordings, along with
recording backups.

HDMI Type-A Terminal

The port allows greater connection
stability to external devices, making
it convenient on-site.

Wi-Fi 6/6E & 2.5G Base-T Support

The first EOS camera to have both
features, enabling faster and more
secure transfers to a smartphone or
router, and stable wired connection at
high speeds.

Dust and Water Resistance

Robust structure that can withstand
rough weather conditions.

Specifications

Camera Model	EOS R1	
Image Processor	DIGIC Accelerator & DIGIC X	
Image Sensor Camera Effective Pixels	Effective sensor size: Full-Frame CMOS Camera effective pixels: Max approx. 24.2 megapixels	
Autofocus Method	Spot AF, 1-point AF, Expand AF area (above / below / left / right or around), Flexible Zone AF 1 / 2 / 3, Whole area AF	
Cross-Type AF	Yes	
Continuous Shooting	Mechanical shutter & Electronic 1st curtain: up to 12 fps Electronic shutter: up to 40 fps	
Max Shutter Speed	1/64,000 sec. (Electronic shutter)	
Eye Control AF	Yes	
Image Stabiliser (IS) System	In-body 5-axis sensor-shift image stabilisation (Stills / Movie)	
Effective ISO	Stills	100-102,400 (L:50, H1:204,800, H2:409,600)
	Movie	Custom Picture (Off): 100-32,000 (H:40,000-102,400, H1:204,800) Canon 709 / PQ / HLG: 400-32,000 (L:100-320, H:40,000-102,400, H1:204,800) Canon Log 2 / Canon Log 3: 800-32,000 (L:100-640, H:40,000-102,400, H1:204,800) BT.709 Standard: 160-32,000 (L:100-125, H:40,000-102,400, H1:204,800)
Metering System	Based on image sensor output signals Stills: 6,144-zone (96 x 64) metering Movie: DCI: 4,800-zone (96 x 50) metering UHD: 5,184-zone (96 x 54) metering	
Viewfinder	0.64-inch OLED, approx. 9.44 million dots 59.94 fps / 119.88 fps Refresh Rate	
Movie	6K RAW (6,000 x 3,164) 59.94 fps / 29.97 fps / 23.98 fps (NTSC) 50.00 fps / 25.00 fps / 24.00 fps (PAL)	
	4K DCI (4,096 x 2,160) 119.88 fps / 59.94 fps / 29.97 fps / 23.98 fps (NTSC) 100.00 fps / 50.00 fps / 25.00 fps / 24.00 fps (PAL)	
	4K UHD (3,840 x 2,160) 119.88 fps / 59.94 fps / 29.97 fps / 23.98 fps (NTSC) 100.00 fps / 50.00 fps / 25.00 fps (PAL)	
	2K DCI (2,048 x 1,080) 239.76 fps / 119.88 fps / 59.94 fps / 29.97 fps / 23.98 fps (NTSC) 200.00 fps / 100.00 fps / 50.00 fps / 25.00 fps / 24.00 fps (PAL)	
	Full HD (1,920 x 1,080) 239.76 fps / 119.88 fps / 59.94 fps / 29.97 fps / 23.98 fps (NTSC) 200.00 fps / 100.00 fps / 50.00 fps / 25.00 fps (PAL)	

Proxy Recording	Simultaneously Recorded (2K DCI / Full HD depending on recording format and size)
Canon Log Profile	Canon Log 2 & Canon Log 3
In-Camera Upscaling	4x
Neural Network Noise Reduction	Yes
Maximum Movie Recording Time	6 hr. 00 min. 00 sec. (Normal Movie) 1 hr. 30 min. 00 sec. (High Frame Rate Movie)
Pre-Continuous Shooting	Up to 20 frames before shutter button pressed AF and AE: Continuous File Formats: RAW / C-Raw / HEIF / JPG
Pre-Recording	3 or 5 seconds before record button is pressed
Recording Media	Supports 2 memory cards: • 2 x CFexpress memory card (Type B compatible) * CFexpress 2.0 and VPG400 supported * Up to 2TB capacity supported (CFexpress card exceeding 2TB capacity is handled as 2TB)
Power Supply	LP-E19
USB Charging / Optional Power	Supports charging via USB Power Adapter PD-E1 / PD-E2 AC Power (AC Adapter AC-E19 and DC Coupler DR-E19)
News Metadata	NewsML-G2 standard
Tally Lamp	Yes
HDMI Terminal	Type-A
Size	Approx. 157.6 × 149.5 × 87.3 mm
Weight	Approx. 1,115 g (incl. battery and memory 1 card, excl. body cap, eyecup or shoe cover)
Network	Wi-Fi: IEEE802.11b/g/n/a/ac/ax Bluetooth: Bluetooth Low Energy Technology Ver 5.3 Ethernet: IEEE 802.3bz (for 2.5G BASE-T)

Canon

Delighting You Always



DISCLAIMERS

This document is for information only and the contents are subject to change without notice. Errors and omissions excepted. Images are simulated. Weight and dimensions are approximates. Nothing in this document should be construed as a warranty. Product/ Service options, name and availability may vary by region. We expressly disclaim any liability or contractual obligations with respect to this document. Canon and EOS among others are trademarks of Canon Inc. and/or its affiliates. Other names, marks and logos contained in this document may be the registered trademarks or trademarks of their respective owners.